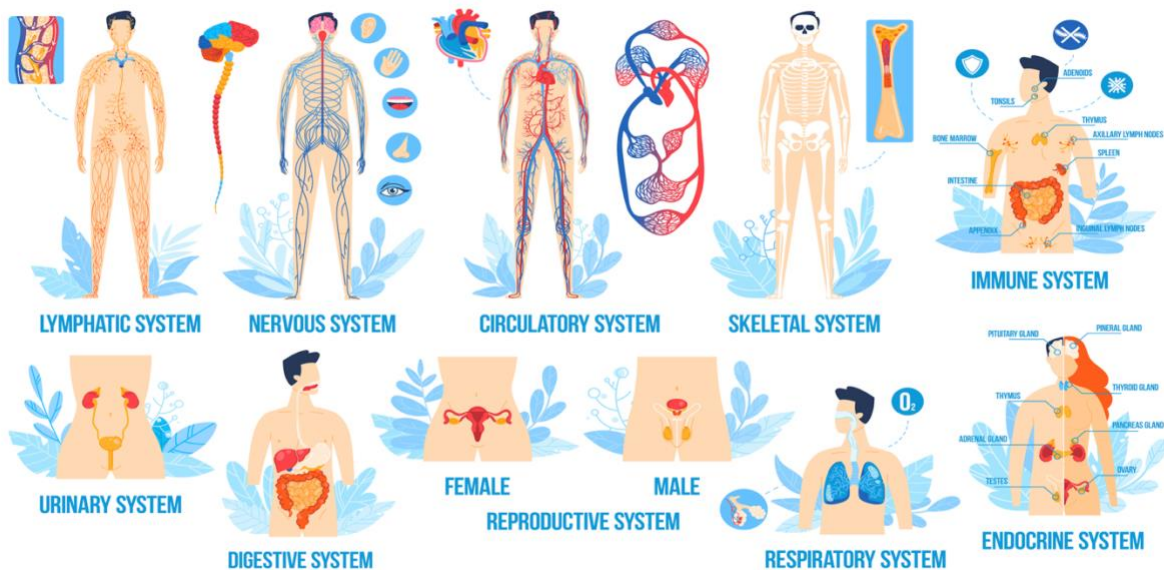


AE Academic English UK

Systems of the Human Body



8. Reproductive System

EXAMPLE

Copyright: These materials are photocopyable but we would appreciate it if all logos and web addresses were left on materials. Thank you.

Teacher's Notes

Lesson aim:

To review/to teach one of the eleven body systems through a range of activities.

Timing:

60 minutes+

Who is this for?

This lesson has been designed as either a range of reviewing/recycling tasks for those that already have some medical knowledge or as a range of activities for those beginning their medical studies.

| Level | Medical Knowledge Level | Lesson Ideas | Lesson Timing |
|-------|--------------------------|--|--|
| All | None | <ol style="list-style-type: none"> 1. Pre-teach the vocabulary before each body system. 2. Drill pronunciation after each body system. 3. Test each body system at the end of each lesson using the test questions at the back of this booklet. Select the questions that are relevant to the body system you wish to test. | <p>40 mins for the introduction. 50-60 mins per system.</p> |
| All | Some | <ol style="list-style-type: none"> 1. Students can work through each task in small groups or pairs if the teacher does not know how much medical knowledge the students have. 2. Drill pronunciation of key medical terms after each body system. | <p>30 mins for the introduction. 40-50 mins per system.</p> |
| All | Studied topic previously | <p>Use as a reviewing/recycling task. Run as a workshop where students are working at their own pace with the teacher feeding in the sample answers when required.</p> | <p>20 mins for the introduction. 20 -30 mins per system.</p> |

Differentiation: Extension ideas

1. Gap fill exercises – remove each table of ‘given’ words.
2. Text boxes – find collocations.
3. Sample paragraph answers – paraphrase or summarise content.
4. Sample paragraph answers – extend the paragraph by researching the organ/system and adding to what has been given.
5. Write a paragraph of other organs or glands in that system.
6. Draw a diagram of an organ and label it.
7. Research an organ and present it to the class.

8. The Reproductive System EXAMPLE

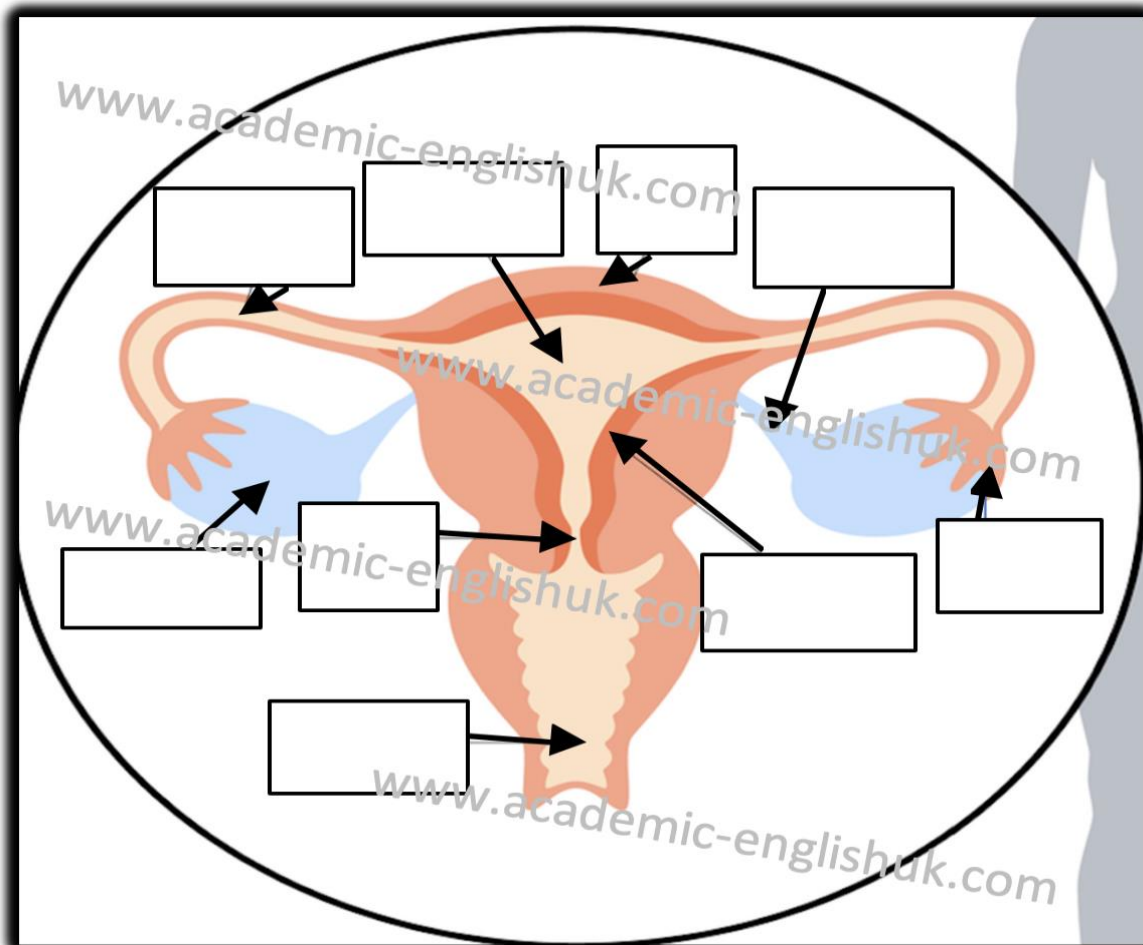
8.1. Make complete sentences by matching the two halves. The first one is done for you.

| | | | |
|------|---|----|---|
| i. | The human reproductive system is arguably the most... | a. | gonads, _____ |
| ii. | It is comprised of both internal and _____ collaboratively... | b. | testes, prostate gland, epididymis, seminal _____ |
| iii. | _____ of three main categories: | c. | _____, labia majora and labia minora. |
| iv. | Examples of internal genitalia _____ | d. | ...important species. |
| v. | Examples _____ include: | e. | ... to produce male germ cells that fuse with _____ individual. |

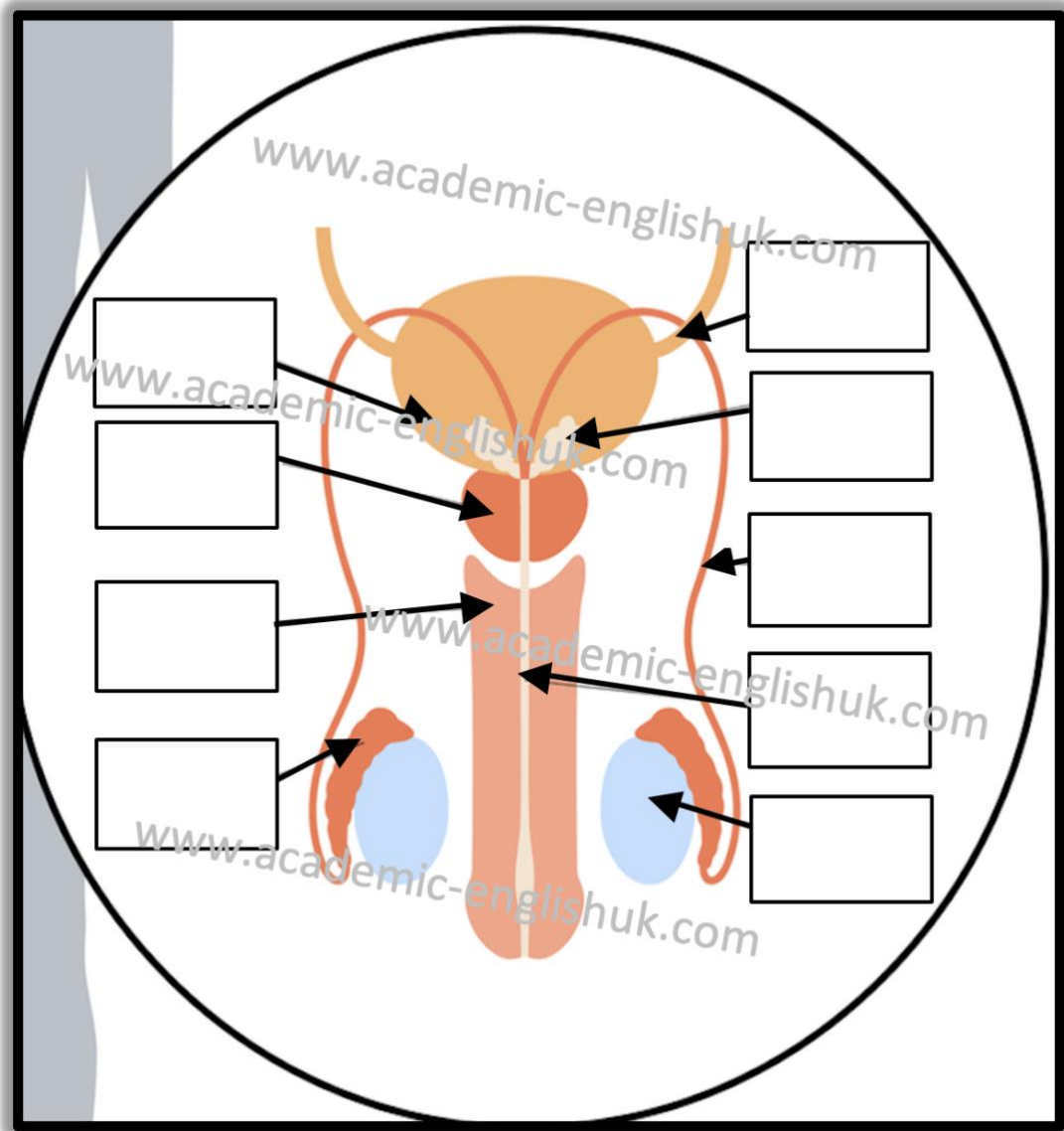
| | | | | | | | | | |
|----|----------|-----|--|------|--|-----|--|----|--|
| i. | <i>d</i> | ii. | | iii. | | iv. | | v. | |
|----|----------|-----|--|------|--|-----|--|----|--|

8.2. Read the sentences aloud to your partner who will check your pronunciation. Your partner will then read them aloud to you so you can check their pronunciation.

8.3. Look at the illustration of the female human reproductive system and label each part using some of the words from 8.1 to help you. Compare with a partner when you have finished.



8.4. Look at the illustration of the male human reproductive system and label each part using some of the words from 8.1 to help you. Compare with a partner when you have finished.



8.5. Practice saying all the words with a partner.

8.6. Write one sentence summarizing the reproductive system.

8.7. **Research task:** select one aspect of the in. Spend 15 minutes finding out what you can about it and present this information in small groups.

8. The Reproductive System ANSWERS

8.1. Make complete sentences by matching the two halves. The first one is done for you.

| | | | |
|-----|--|----|---|
| i. | The human reproductive system is arguably the most... | a. | gonads, internal genitalia and external genitalia. |
| ii. | It is comprised of both internal and external organs.... | b. | testes, prostate gland, epididymis, seminal vesicles... |

ALL ANSWERS INCLUDED IN PAID VERSION...